

Human Anti-PEG IgE Kit

Datasheet

Introduction

The FocalTuning™ DCBA Human Anti-PEG IgE Kit (Catalog No. LLT-PEG-IgE) is used to detect anti-PEG IgE antibody in a single plasma or serum sample. The kit provides sufficient reagents for testing 5, 25 or 75 samples.

Principal of the assay

FocalTuning™ DCBA assays are patented technology for accurately detecting soluble analytes by removing internal background. Both capture and control beads are integrated with same capture substance but only capture beads seize target while the control beads cannot. The two bead populations are mixed together to form bead array, which are resolved in a red channel of flow cytometer. The detection reagents are a mixture of phycoerythrin (PE)-conjugated antibodies, which provide a fluorescent signal in proportion to the amount of bound analyte. The Human Anti-PEG IgE kit measures specific anti-PEG IgE by comparing the detection signal of capture beads vs. control beads (see Figure 1).

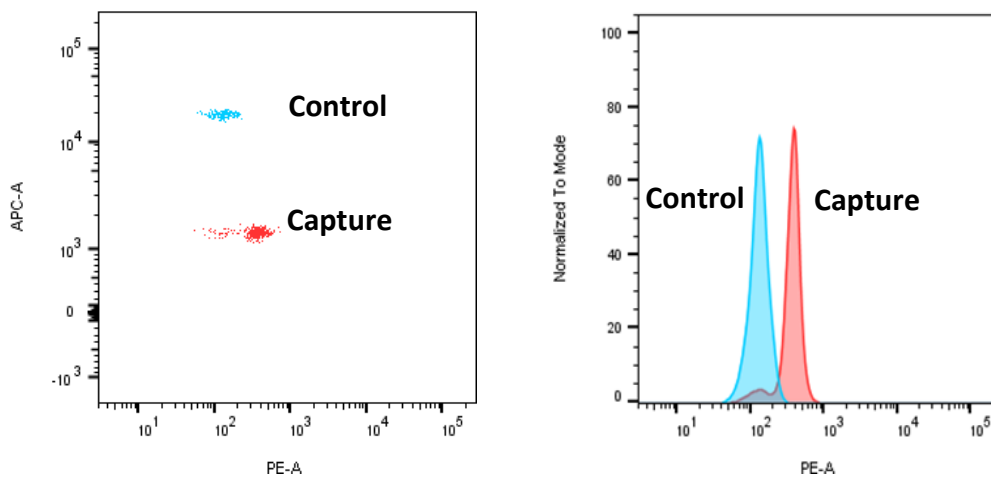


Figure 1

For research use only. Not for human diagnostic or therapeutic use

CATALOG NUMBER

LLT-PEG-IgE (X5, X25, X75)

DETECTION METHOD

Flow Cytometry

PRECISION

Intra-assay coefficient of variation (CV) <10%. Inter-assay CV was <10%

DETECTION LIMIT

0.4ng/ml

STORAGE CONDITIONS

Standard anti-PEG IgE, positive and negative control serum should be stored at -20°C or -80°C and are stable at least 12 months; other reagents are stable at 4°C for 6 months.

SAFETY WARNINGS AND PRECAUTIONS

Research Use Only. Follow manual instructions.

EACH KIT INCLUDES

Human anti-PEG IgE Capture Beads; Human anti-PEG IgE Control Beads; Human Anti-PEG IgE Detection Reagents; Cytometer Setup Beads; PE Positive Control Detector; Human Anti-PEG IgE Standard; Human Anti-PEG IgE positive control; Human Anti-PEG IgE negative control; Wash Buffer; Assay Diluent

For research use only. Not for human diagnostic or therapeutic use