

Human Anti-PEG IgM Kit

Datasheet

Introduction

The FocalTuning™ DCBA Human Anti-PEG IgM Kit (Catalog No. LLT-PEG-IgM) is used to detect anti-PEG IgM antibody in a single plasma or serum sample. The kit provides sufficient reagents for testing 5, 25 or 75 samples.

Principal of the assay

FocalTuning™ DCBA assays are patented technology for accurately detecting soluble analytes by removing internal background. Both capture and control beads are integrated with same capture substance but only capture beads seize target while the control beads cannot. The two bead populations are mixed together to form bead array, which are resolved in a red channel of flow cytometer. The detection reagents are a mixture of phycoerythrin (PE)-conjugated antibodies, which provide a fluorescent signal in proportion to the amount of bound analyte. The Human Anti-PEG IgM kit measures specific anti-PEG IgM by comparing the detection signal of capture beads vs. control beads (see Figure 1).

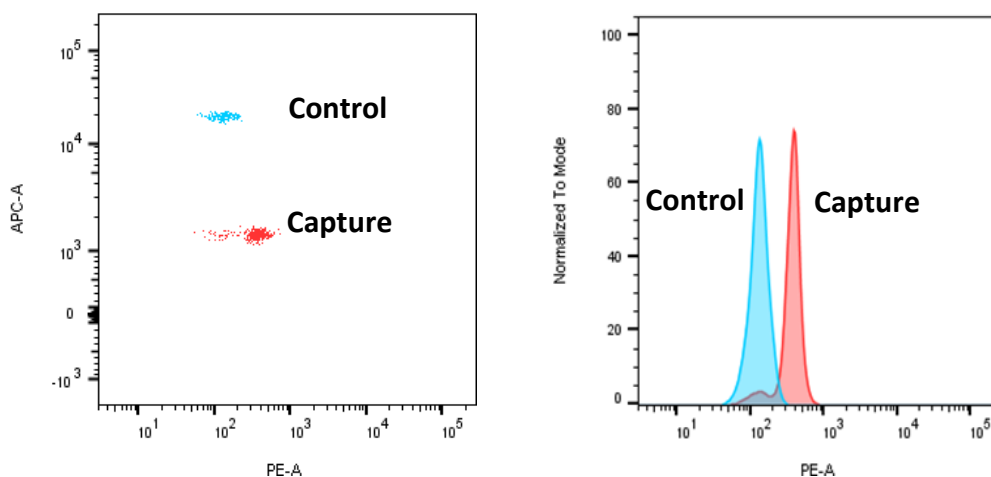


Figure 1

For research use only. Not for human diagnostic or therapeutic use

CATALOG NUMBER

LLT-PEG-IgM (X5, X25, X75)

DETECTION METHOD

Flow Cytometry

PRECISION

Intra-assay coefficient of variation (CV) <10%. Inter-assay CV was <10%

DETECTION LIMIT

16ng/ml

STORAGE CONDITIONS

Standard anti-PEG IgM, positive and negative control serum should be stored at -20°C or -80°C and are stable at least 12 months; other reagents are stable at 4°C for 6 months.

SAFETY WARNINGS AND PRECAUTIONS

Research Use Only. Follow manual instructions.

EACH KIT INCLUDES

Human anti-PEG IgM Capture Beads; Human anti-PEG IgM Control Beads; Human Anti-PEG IgM Detection Reagents; Cytometer Setup Beads; PE Positive Control Detector; Human Anti-PEG IgM Standard; Human Anti-PEG IgM positive control; Human Anti-PEG IgM negative control; Wash Buffer; Assay Diluent

For research use only. Not for human diagnostic or therapeutic use