

# Human Anti-PEG IgG Kit

## Datasheet

### Introduction

The FocalTuning™ DCBA Human Anti-PEG IgG Kit (Catalog No. LLT-PEG-IgG) is used to detect anti-PEG IgG antibody in a single plasma or serum sample. The kit provides sufficient reagents for testing 5, 25 or 75 samples.

### Principal of the assay

FocalTuning™ DCBA assays are patented technology for accurately detecting soluble analytes by removing internal background. Both capture and control beads are integrated with same capture substance but only capture beads seize target while the control beads cannot. The two bead populations are mixed together to form bead array, which are resolved in a red channel of flow cytometer. The detection reagents are a mixture of phycoerythrin (PE)-conjugated antibodies, which provide a fluorescent signal in proportion to the amount of bound analyte. The Human Anti-PEG IgG kit measures specific anti-PEG IgG by comparing the detection signal of capture beads vs. control beads (see Figure 1).

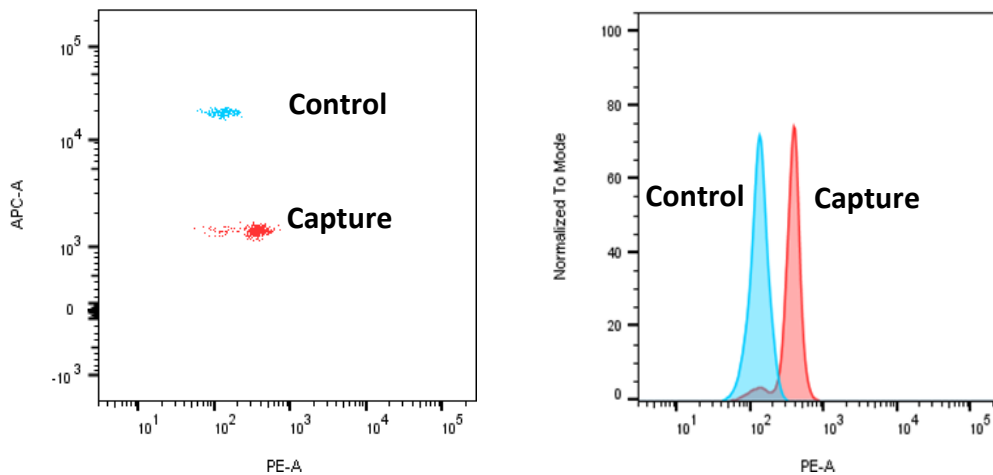


Figure 1

For research use only. Not for human diagnostic or therapeutic use

**CATALOG NUMBER**

LLT-PEG-IgG (X5, X25, X75)

**DETECTION METHOD**

Flow Cytometry

**PRECISION**

Intra-assay coefficient of variation (CV) <10%. Inter-assay CV was <10%

**DETECTION LIMIT**

0.8ng/ml

**STORAGE CONDITIONS**

Standard anti-PEG IgG, positive and negative control serum should be stored at -20°C or -80°C and are stable at least 12 months; other reagents are stable at 4°C for 6 months.

**SAFETY WARNINGS AND PRECAUTIONS**

Research Use Only. Follow manual instructions.

**EACH KIT INCLUDES**

Human anti-PEG IgG Capture Beads; Human anti-PEG IgG Control Beads; Human Anti-PEG IgG Detection Reagents; Cytometer Setup Beads; PE Positive Control Detector; Human Anti-PEG IgG Standard; Human Anti-PEG IgG positive control; Human Anti-PEG IgG negative control; Wash Buffer; Assay Diluent

**For research use only. Not for human diagnostic or therapeutic use**